

THE NEW DEAL REALIGNMENT

POLITICS

| | House | | | Senate | | | Presidential | | No. | % Turnout | | |
|------|-------|-----|----|--------|----|---|--------------|------|---------|-----------|------|------|
| | D | R | O | D | R | O | % | % | | | | |
| 1928 | 164 | 270 | 1 | 39 | 56 | 1 | Smith | 40.9 | Hoover | 58.2 | 36.4 | |
| 1930 | 217 | 217 | 1 | 47 | 48 | 1 | | | | | | |
| 1932 | 313 | 117 | 5 | 59 | 36 | 1 | Roosevelt | 57.4 | Hoover | 39.7 | 38.6 | 52.4 |
| 1934 | 322 | 103 | 10 | 69 | 25 | 2 | | | | | | |
| 1936 | 334 | 88 | 13 | 76 | 16 | 4 | Roosevelt | 60.8 | Landon | 36.6 | 44.4 | 56.9 |
| 1938 | 262 | 169 | 4 | 69 | 23 | 4 | | | | | | |
| 1940 | 267 | 162 | 6 | 66 | 28 | 2 | Roosevelt | 54.3 | Willkie | 44.5 | 49.5 | 58.9 |

ECONOMICS

| | Unemployment | GNP | Consumer Prices | Manufacturing | Investment | Stocks |
|------|--------------|--------------------|-------------------|-----------------|-------------------|--------------------|
| 1929 | 3.2 | 104.4 ^a | 73.3 ^b | 58 ^b | 16.2 ^c | 260.2 ^d |
| 1930 | 8.7 | 95.1 | 71.4 | 48 | 10.3 | 210.3 |
| 1931 | 15.9 | 89.5 | 65.0 | 39 | 5.5 | 136.6 |
| 1932 | 23.6 | 76.4 | 58.4 | 30 | .9 | 69.3 |
| 1933 | 24.9 | 74.2 | 55.3 | 36 | 1.4 | 89.6 |
| 1934 | 21.7 | 80.8 | 57.2 | 39 | 2.9 | 98.4 |
| 1935 | 20.1 | 91.4 | 58.7 | 46 | 6.3 | 106.0 |
| 1936 | 16.9 | 100.9 | 59.3 | 55 | 8.4 | 154.7 |
| 1937 | 14.3 | 109.1 | 61.4 | 60 | 11.9 | 154.1 |
| 1938 | 19.0 | 103.2 | 60.3 | 46 | 6.7 | 114.9 |
| 1939 | 17.2 | 111.0 | 59.4 | 57 | 9.3 | 120.6 |
| 1940 | 14.6 | 121.0 | 59.9 | 66 | 13.2 | 110.2 |
| 1941 | 9.9 | 138.7 | 62.9 | 88 | 18.1 | 98.2 |

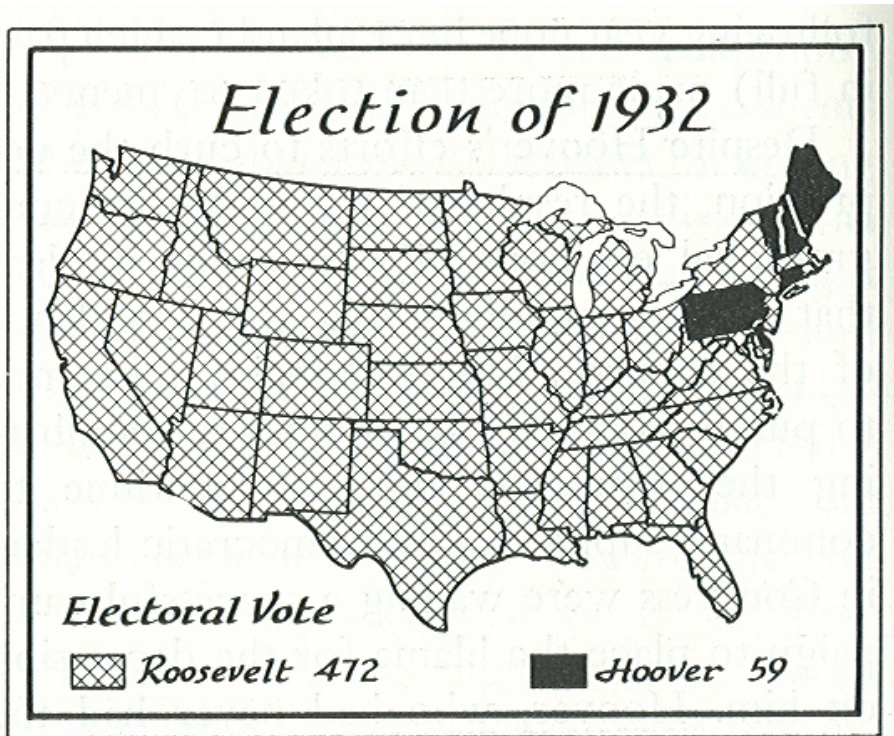
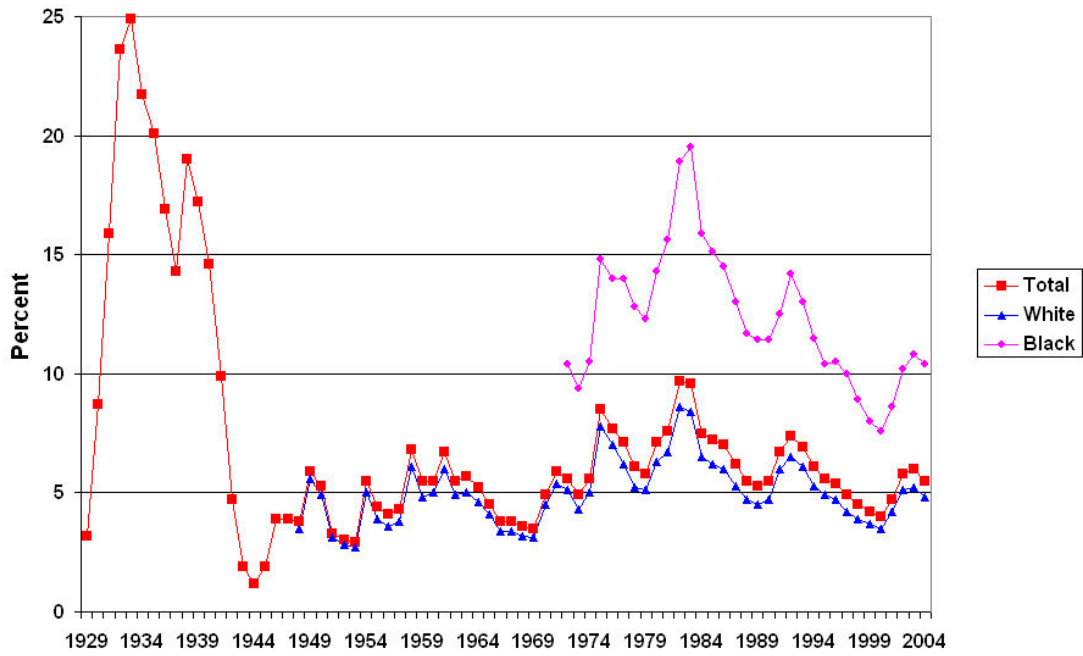
^a \$ Billions in 1929 Prices.

^b 1947-49 = 100 base

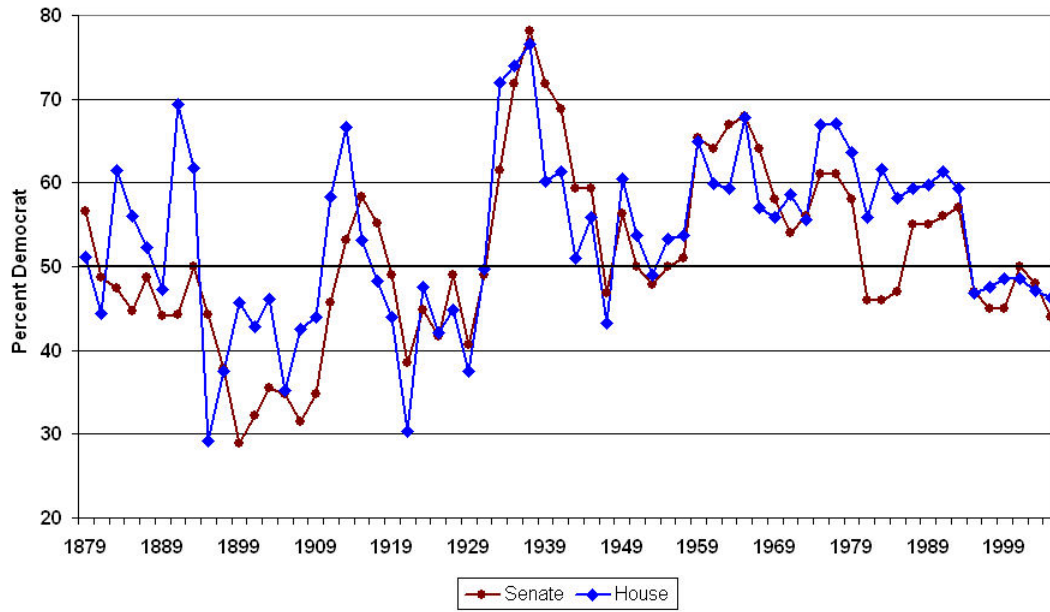
^c Gross Private Domestic Investment (\$ Billions)

^d Average Prices of Stocks (1941-43 = 100)

Unemployment: 1929-2004



Congress: 1879-2005
Percent Democrat



Summary -- Realignment of the 1930s (to late 1930s) -- Neither Party Replaced

- 1. Breadth and Depth of the Underlying Grievance – Economic Disaster. Sudden and Unexpected and the Republicans were blamed for it.**
- 2. Capacity to Provoke Resistance – Haves vs. the Have Nots.**
- 3. Leadership – Lagged Behind the General Public. The Republicans were unable to adapt.**
- 4. Division of Polar Forces Between the Two Parties – Affected Mainly the Republicans. They were Reduced to a fraction of their former Support.**
- 5. Strength of Existing Party Attachments – Strong, but overwhelmed by the sheer Magnitude of the Economic Disaster.**